



Model: _____

Item #: _____ Quantity: _____

Project: _____



(18-53C Shown)

1800 or 2100 Series Available
(see reverse)

Accessories

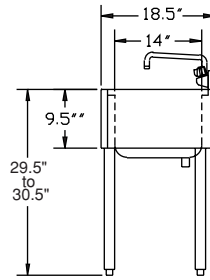
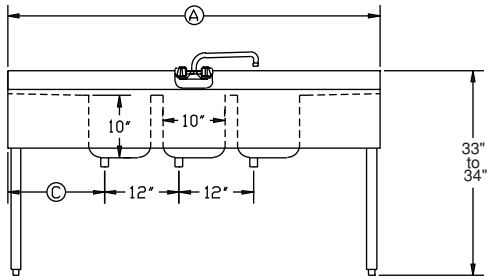
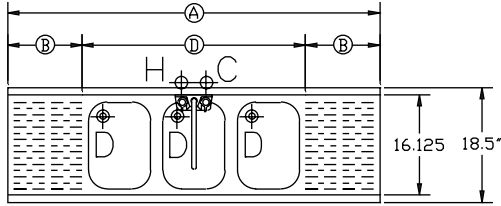
- Standard Single Tier Keyhole Speedrail
(available sizes: 24", 30", 36", and 48")
- Standard Double Tier Keyhole Speedrail
(available sizes: 24", 30" and 36")
- Perforated Basket
- 1800 and 2100 Corner Return
- Side Splash
- Towel Ring
- Stainless Steel Legs (upgrade)
- Royal Faucet (upgrade)

- **Sink Bowl:**
20 gauge stainless steel 10" x 14" x 9 3/4" deep. 1 1/2" radius on all vertical and horizontal corners. Furnished with 1" stainless steel drain and 7 1/2" standpipe. Drain located in left rear corner.
- **Drainboard:**
20 gauge embossed stainless steel reinforced with welded braces every six inches. 3/4" radius on all vertical and horizontal edges.
- **Front Apron:**
22 gauge 304 series stainless steel clad over 20 gauge galvanized.
- **Backsplash:**
22 gauge 304 series stainless steel.
- **Sides:**
20 gauge stainless steel.
- **Back and Bottom:**
20 gauge galvanized.
- **Legs:**
1 5/8" tubular 16 gauge galvanized steel with grey plastic bullet foot.
- **Water Faucet:**
4" center splash mount faucet on 1800 models.
4" center deck mount faucet on 2100 models.
- **Plumbing:**
1/2" IPS hot and cold water
1" IPS drain connection

Approved By: _____

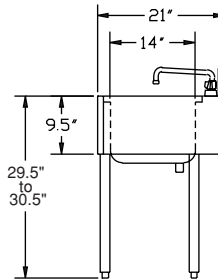
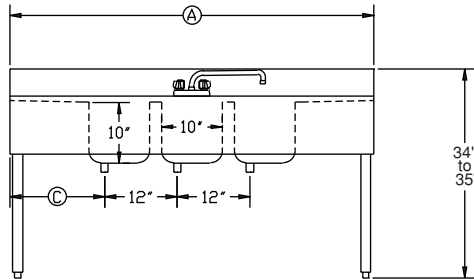
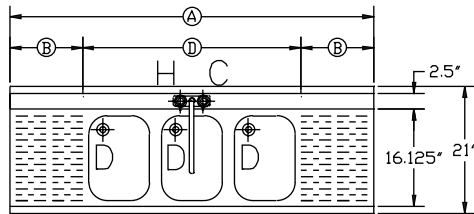
Model: _____ Item #: _____ Quantity: _____ Project: _____

1800 Series



Model Numbers	Length (A)	Bowls (D)	Drainboard (B)	Left Side to Drain (C)	Weight lbs
18-31C	3'-0"	1	12" each	16"	48
18-32L	3'-0"	2	12" right	4"	53
18-32R	3'-0"	2	12" left	15"	53
18-42L	4'-0"	2	24" right	4"	55
18-42R	4'-0"	2	24" left	27"	55
18-42C	4'-0"	2	12" each	15"	55
18-33	3'-0"	3	n/a	4"	55
18-43L	4'-0"	3	12" right	4"	60
18-43R	4'-0"	3	12" left	15"	60
18-53C	5'-0"	3	12" each	15"	69
18-63C	6'-0"	3	18" each	21"	75
18-73C	7'-0"	3	24" each	27"	86
18-83C	8'-0"	3	30" each	33"	94
18-64C	6'-0"	4	12" each	15"	79
18-74C	7'-0"	4	18" each	21"	91
18-84C	8'-0"	4	24" each	27"	99

2100 Series



Model Numbers	Length (A)	Bowls (D)	Drainboard (B)	Left Side to Drain (C)	Weight lbs
21-31C	3'-0"	1	12" each	16"	51
21-32L	3'-0"	2	12" right	4"	56
21-32R	3'-0"	2	12" left	15"	56
21-42L	4'-0"	2	24" right	4"	58
21-42R	4'-0"	2	24" left	27"	58
21-42C	4'-0"	2	12" each	15"	58
21-33	3'-0"	3	n/a	4"	53
21-43L	4'-0"	3	12" right	4"	63
21-43R	4'-0"	3	12" left	15"	63
21-53C	5'-0"	3	12" each	15"	75
21-63C	6'-0"	3	18" each	21"	85
21-73C	7'-0"	3	24" each	27"	95
21-83C	8'-0"	3	30" each	33"	104
21-64C	6'-0"	4	12" each	15"	88
21-74C	7'-0"	4	18" each	21"	100
21-84C	8'-0"	4	24" each	27"	109

Mechanical Requirements:

1/2" IPS Hot and Cold Water.
1" IPS Drain Connection.

Approved By: _____

Due to our commitment to continued product improvement, specifications are subject to change without notice.