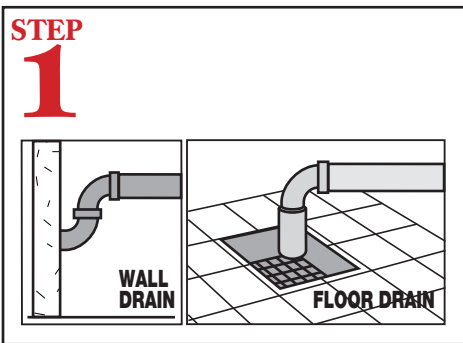


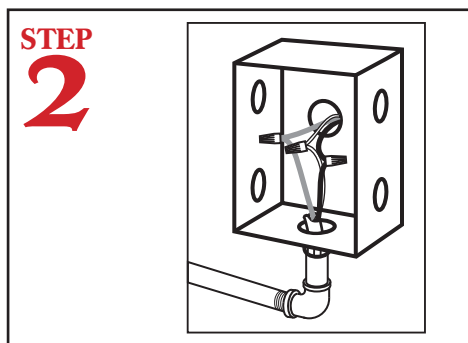
# Models AH, C, B, CB

## Quick Setup Instructions

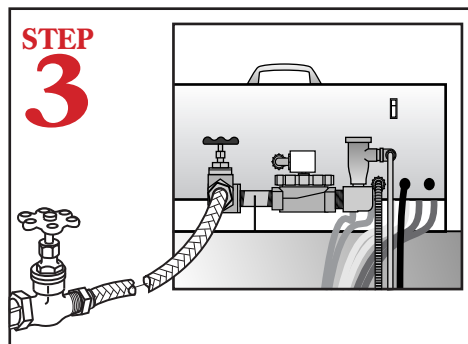
MODEL AH REAR VIEW



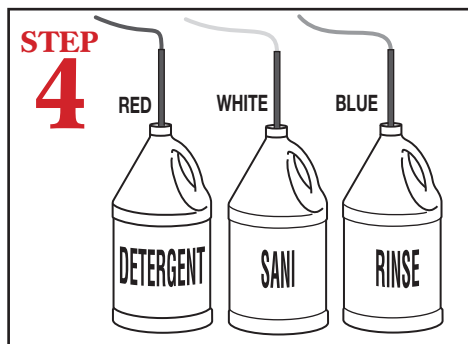
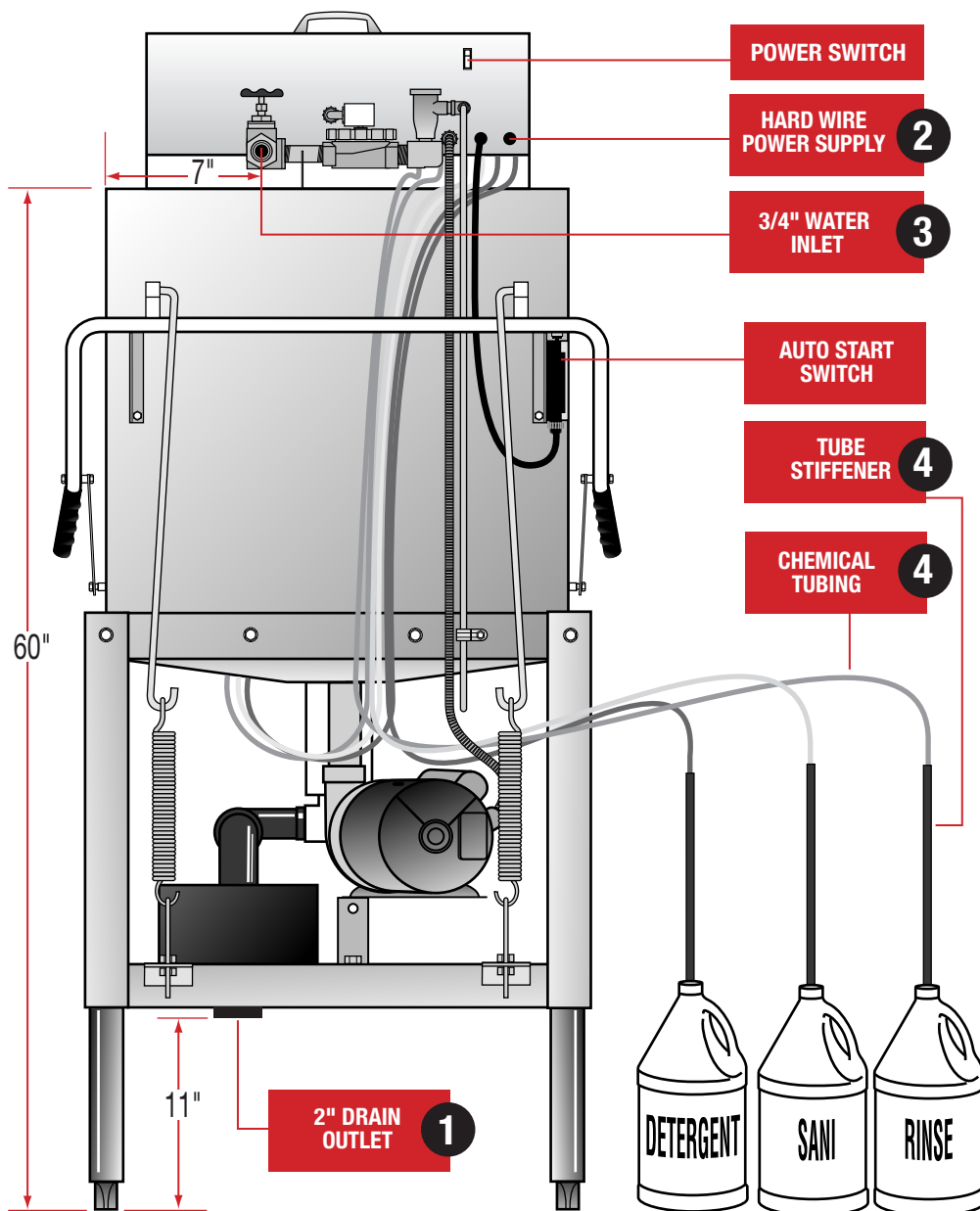
Connect the drain pipe from scrap accumulator to floor or wall drain.



Connect hard wire power supply from dishmachine to power box.



Connect dishmachine to hot water source recommended 140° temperature. (120° minimum temperature required).



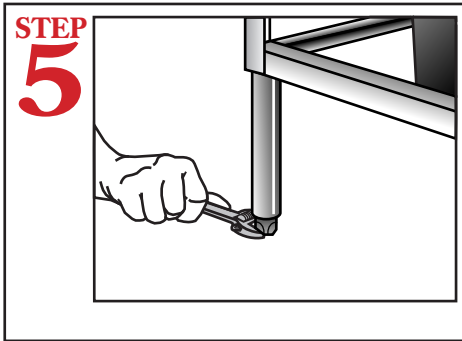
Insert tube stiffener with chemical tubing into corresponding chemical dispensers.



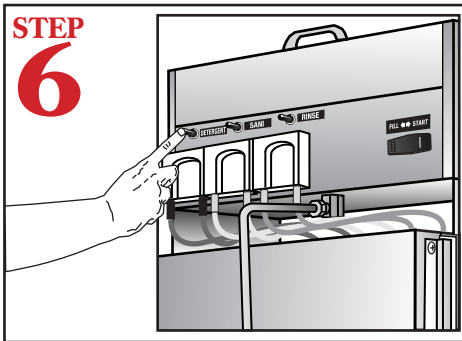
# Models AH, C, B, CB

## Quick Setup Instructions

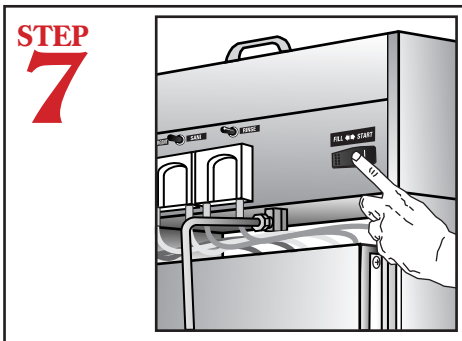
MODEL AH FRONT VIEW



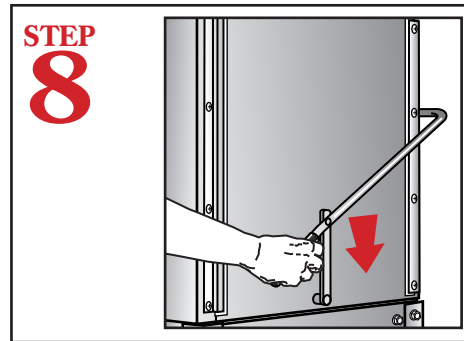
Level dishmachine by adjusting leveling legs. Dishmachine must be level front and back.



Press and hold down the three Primer Toggle Switches for the chemical pumps until product is discharging into the machine.



Press and hold the Fill/Start Switch until the water level is approximately 1/2" to 3/4" below the overflow hole in the PVC standpipe.



To start machine close the doors. The machine will automatically start and run through its cycle.

