



Profit from the Eagle Advantage®

Specification Sheet

Short Form Specifications

Eagle 2200 Series Blender Module, model _____.
On all models: top, front, and backsplash to be heavy gauge type 304 stainless steel. Liquid waste chute with 1½" drain, strainer, faucet and tail piece. Blender recess with 15-amp, 120-volt GFCI receptacle mounted for field wiring with waterproof cover plate. 1½" O.D. galvanized tubular legs with adjustable bullet feet.

Models with sink: 10" x 14" x 9½"-deep sink to be heavy gauge type 304 stainless steel.

Models with ice bin: Ice bin to be heavy gauge type 304 stainless steel and fully insulated, with 1½" drain.

Models with ice bin and bottle holders: Ice bin to be heavy gauge type 304 stainless steel and fully insulated. Removable bottle holders on either one side of ice bin or both sides of ice bin.

Models with ice bin and workboard: ice bin to be heavy gauge type 304 stainless steel and fully insulated. 24" embossed workboard section.



#BM3-22R
2200 Series blender module

EAGLE GROUP
100 Industrial Boulevard, Clayton, DE 19938-8903 USA
Phone: 302-653-3000 • Fax: 302-653-2065
www.eaglegrp.com

Foodservice Division: Phone 800-441-8440
MHC/Retail Display Divisions: Phone 800-637-5100

For custom configuration or fabrication needs, contact our **SpecFAB® Division**.
Phone: 302-653-3000 • Fax: 302-653-3091 • e-mail: specfab@eaglegrp.com

Item No.: _____
Project No.: _____
S.I.S. No.: _____

2200 Series Blender Modules

MODELS:

- | | | | |
|--|---|--|---|
| <input type="checkbox"/> BD24-22L | <input type="checkbox"/> BM50-22R | <input type="checkbox"/> BM3-22L-7 | <input type="checkbox"/> BM50R-22L-7 |
| <input type="checkbox"/> BD24-22R | <input type="checkbox"/> BM50R-22L | <input type="checkbox"/> BM3-22R-7 | <input type="checkbox"/> BM50L-22R-7 |
| <input type="checkbox"/> BM3-22L | <input type="checkbox"/> BM50L-22R | <input type="checkbox"/> BM50-22L-7 | <input type="checkbox"/> BM62-22L-7 |
| <input type="checkbox"/> BM3-22R | <input type="checkbox"/> BM62-22L | <input type="checkbox"/> BM50-22R-7 | <input type="checkbox"/> BM62-22R-7 |
| <input type="checkbox"/> BM50-22L | <input type="checkbox"/> BM62-22R | | |

Design and Construction Features

- Stainless steel type 304 body.
- 12" (305mm) wide blender recess—may be located either side. 14" (356mm) wide on 50" and 62" (1270 and 1575mm) models.
- 15-amp, 120-volt receptacle mounted for field wiring (NEMA 5-15R).
- 63 lb. (28.6kg) ice capacity.
- Liquid waste chute with 1½" (38mm) drain, strainer, faucet, and tail piece.
- High-impact, corrosion-resistant, fully-adjustable bullet feet.
- New bullnose front edge.
- Fabricated ice bin.

Options / Accessories

- Stainless steel leg kits



Spec sheets available for viewing, printing or downloading from our online literature library at www.eaglegrp.com



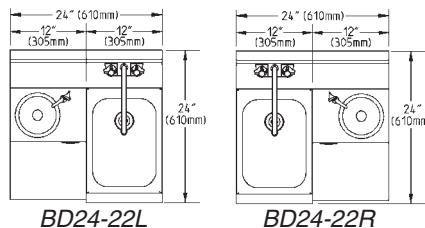
Profit from the Eagle Advantage®

Item No.: _____
 Project No.: _____
 S.I.S. No.: _____

2200 Series Blender Modules

24" (610mm) Models with Sink

Includes 10" x 14" x 9½" (254 x 356 x 241mm) sink with splash mounted faucet - (no ice chest).



BD24-22L

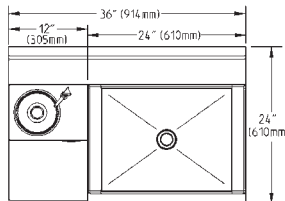
BD24-22R

model #	width	length	weight
	in. mm	in. mm	lbs. kg
BD24-22L	24" 610	24" 610	44 20.0
BD24-22R	24" 610	24" 610	44 20.0

No cold plate option available.

36" (914mm) Models with Ice Chest

Includes 15½" x 19¾" x 8" (394 x 502 x 203mm) ice chest.



BM3-22L

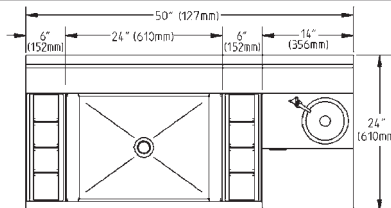
model #	width	length	weight
	in. mm	in. mm	lbs. kg
BM3-22L	24" 610	36" 914	69 31.3
BM3-22R	24" 610	36" 914	69 31.3

UNITS WITH COLD PLATE

BM3-22L-7	24" 610	36" 914	99 44.9
BM3-22R-7	24" 610	36" 914	99 44.9

50" (1270mm) Models with Ice Chest

Includes 15½" x 19¾" x 8" (394 x 502 x 203mm) ice chest centered between bottle holders.



BM50-22R

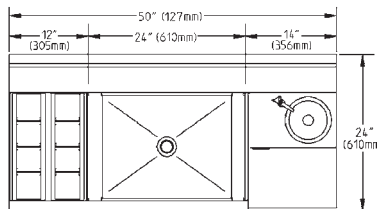
model #	width	length	weight
	in. mm	in. mm	lbs. kg
BM50-22L	24" 610	50" 1270	96 43.6
BM50-22R	24" 610	50" 1270	96 43.6

UNITS WITH COLD PLATE

BM50-22L-7	24" 610	50" 1270	126 57.2
BM50-22R-7	24" 610	50" 1270	126 57.2

50" (1270mm) Models with Ice Chest

Includes 15½" x 19¾" x 8" (394 x 502 x 203mm) ice chest centered between bottle holders and blander recess.



BM50L-22R

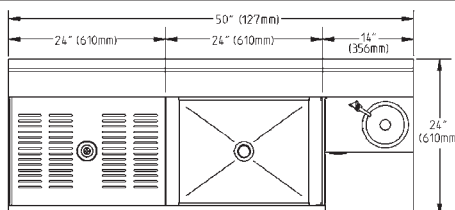
model #	width	length	weight
	in. mm	in. mm	lbs. kg
BM50R-22L	24" 610	50" 1270	96 43.6
BM50L-22R	24" 610	50" 1270	96 43.6

UNITS WITH COLD PLATE

BM50R-22L-7	24" 610	50" 1270	126 57.2
BM50L-22R-7	24" 610	50" 1270	126 57.2

62" (1575mm) Models with Ice Chest

Includes 15½" x 19¾" x 8" (394 x 502 x 203mm) ice chest.



BM62-22R

model #	width	length	weight
	in. mm	in. mm	lbs. kg
BM62-22L	24" 610	62" 1575	110 49.9
BM62-22R	24" 610	62" 1575	110 49.9

UNITS WITH COLD PLATE

BM62-22L-7	24" 610	62" 1575	146 66.2
BM62-22R-7	24" 610	62" 1575	146 66.2

Optional Stainless Steel Leg Kits

add suffix #	description
-SL	stainless steel leg assemblies
-SLF	stainless steel leg assemblies & stainless steel feet
-SLG	stainless steel leg assemblies & stainless steel gussets
-SLGF	stainless steel leg assemblies, stainless steel feet & gussets

EAGLE GROUP

100 Industrial Boulevard, Clayton, DE 19938-8903 USA

Phone: 302-653-3000 • Fax: 302-653-2065

www.eaglegrp.com

Foodservice Division: Phone 800-441-8440

MHC/Retail Display Divisions: Phone 800-637-5100

Printed in U.S.A.
 ©2010 by Eagle Group

Rev. 06/10

Spec sheets available for viewing, printing or downloading from our online literature library at www.eaglegrp.com

Although every attempt has been made to ensure the accuracy of the information provided, we cannot be held responsible for typographical or printing errors. Information and specifications are subject to change without notice. Please confirm at time of order.